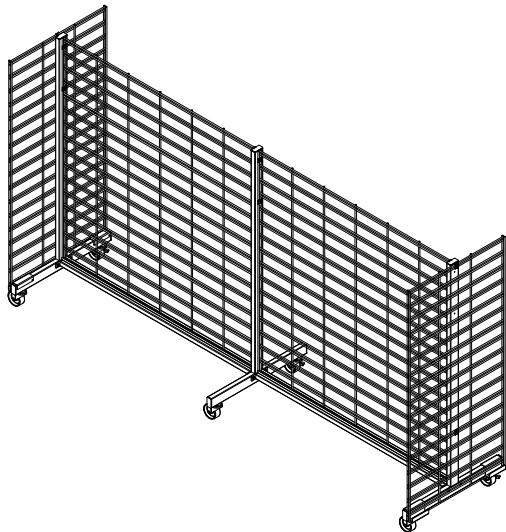


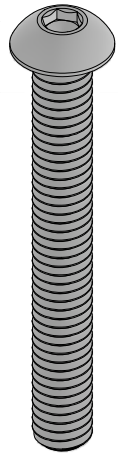
SINGLE SECTION WIRE GRID GONDOLA DISPLAY PARTS LIST

ITEM	PART NUMBER	QTY
1	BOTTOM CONNECTING BAR	1
2	BOTTOM SUPPORT BAR	2
3	SIDE BAR	2
4	BOTTOM SUPPORT PLATE	4
5	MIDDLE GRIDWALL PANEL	1
6	SIDE GRIDWALL PANEL	2
7	FIXED PLATE	8
8	3" CASTER NO BRAKE	2
9	3" CASTER WITH BRAKE	2
10	1/4-20 X 1/2" PHILLIPS HEAD SCREW	4
11	5/16-18 X 2 1/2" HEX HEAD SCREW	4
12	10-32 X 3/4" PHILLIPS HEAD SCREW	8
13	#10 SPRING WASHER	8
14	HEX WRENCH	1

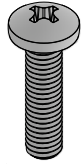
NOTE:
WIRE GRID GONDOLA CAN BE BUILT IN MULTIPLE SECTIONS

VISUALS IN FOLLOWING INSTRUCTIONS SHOW A SINGLE
SECTION AS SHOWN TO THE RIGHT

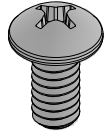




5/16-18 X 2 1/2" HEX HEAD SCREW



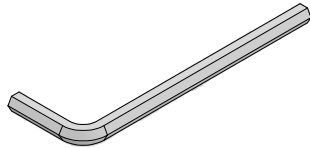
10-32 X 3/4" PHILLIPS HEAD SCREW



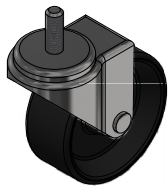
1/4-20 X 1/2" PHILLIPS HEAD SCREW



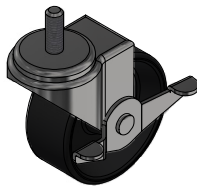
#10 SPRING WASHER



HEX WRENCH



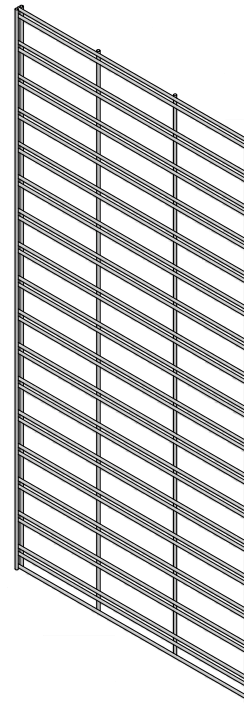
3" CASTER NO BRAKE



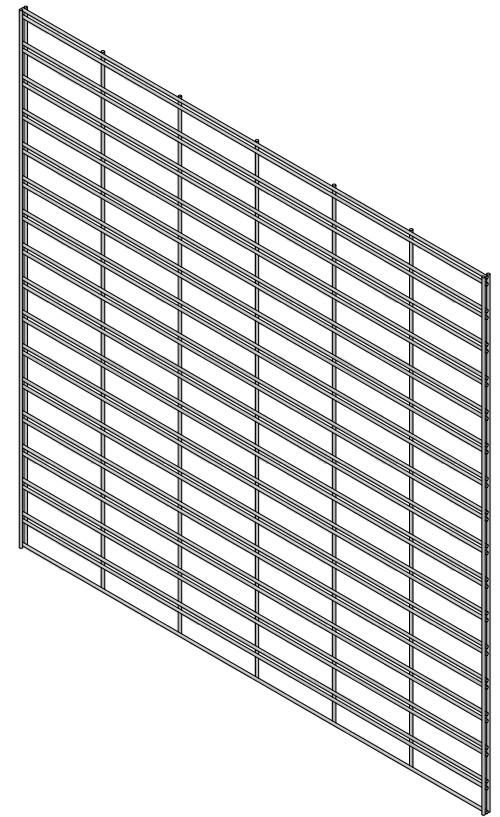
3" CASTER WITH BRAKE



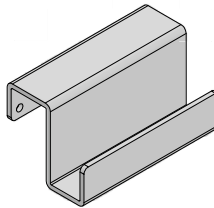
SIDE BAR



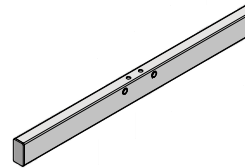
SIDE GRIDWALL PANEL



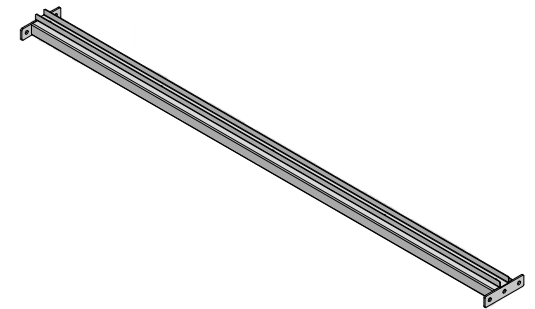
MIDDLE GRIDWALL PANEL



BOTTOM SUPPORT PLATE



BOTTOM SUPPORT BAR



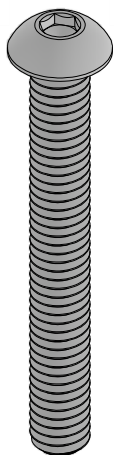
BOTTOM CONNECTING BAR

STEP 1:

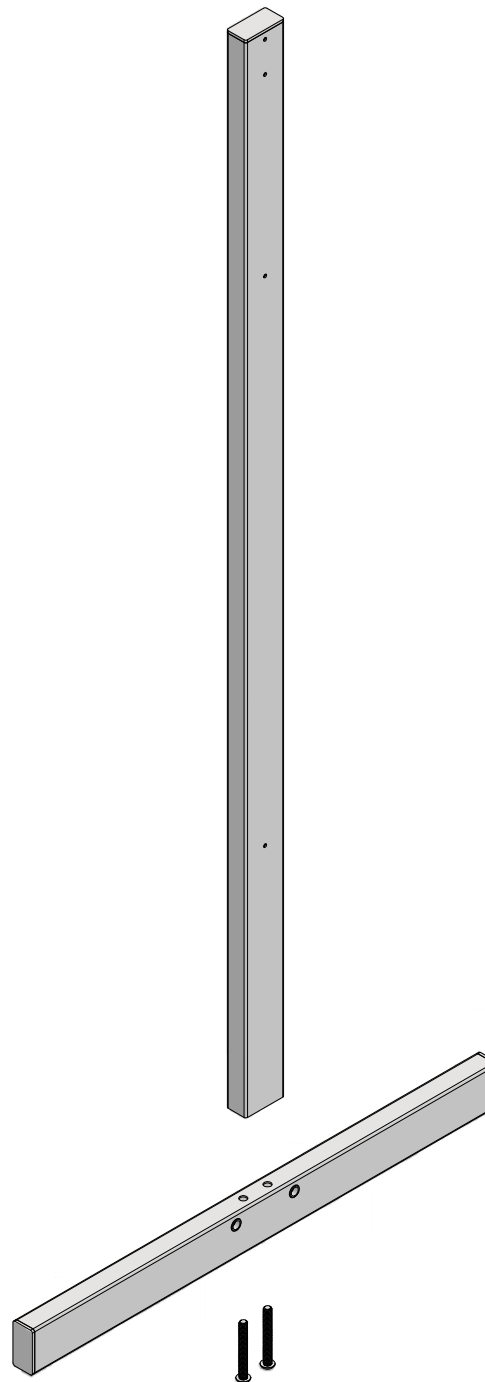
ATTACH THE BOTTOM SUPPORT BAR TO THE SIDE BAR USING THE 5/16-18 X 2 1/2" HEX HEAD SCREWS USING THE INCLUDED HEX WRENCH TO CREATE A "T-LEG"

REPEAT THIS PROCESS FOR ALL ADDITIONAL T-LEG(S) IN YOUR RUN

HARDWARE



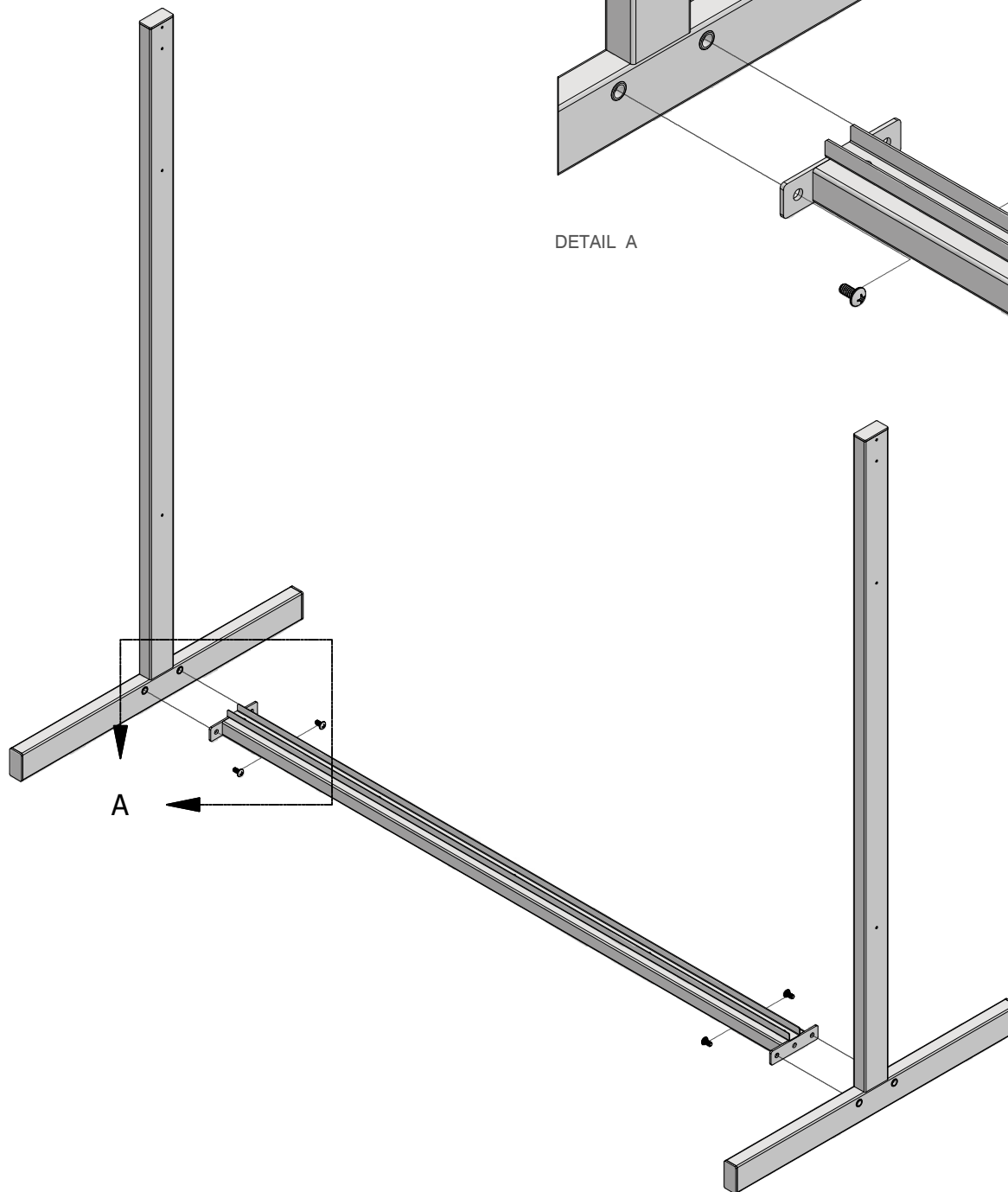
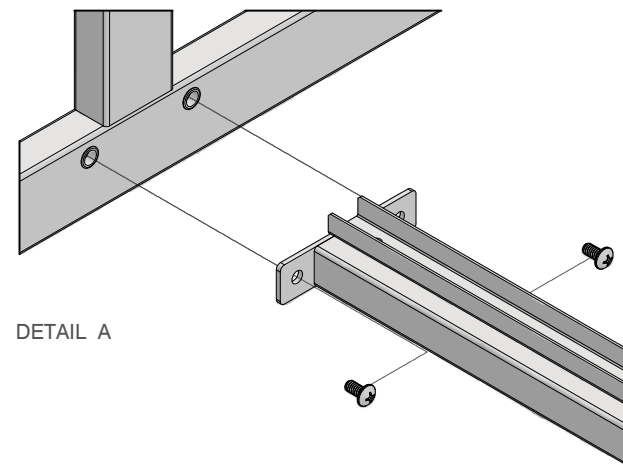
5/16-18 X 2 1/2" HEX HEAD SCREW



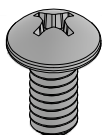
STEP 2:

ATTACH THE BOTTOM CONNECTING BAR TO EACH T-LEG
WITH 1/4-20 X 1/2" PHILLIPS HEAD SCREWS USING A
PHILLIPS HEAD SCREW DRIVER (*NOT INCLUDED*)

IF YOU RUN IS MULTIPLE SECTIONS IN LENGTH, ADD THE
ADDITIONAL BOTTOM CONNECTING BARS AND ASSEMBLED
T-LEGS NOW



HARDWARE



1/4-20 X 1/2" PHILLIPS HEAD SCREW

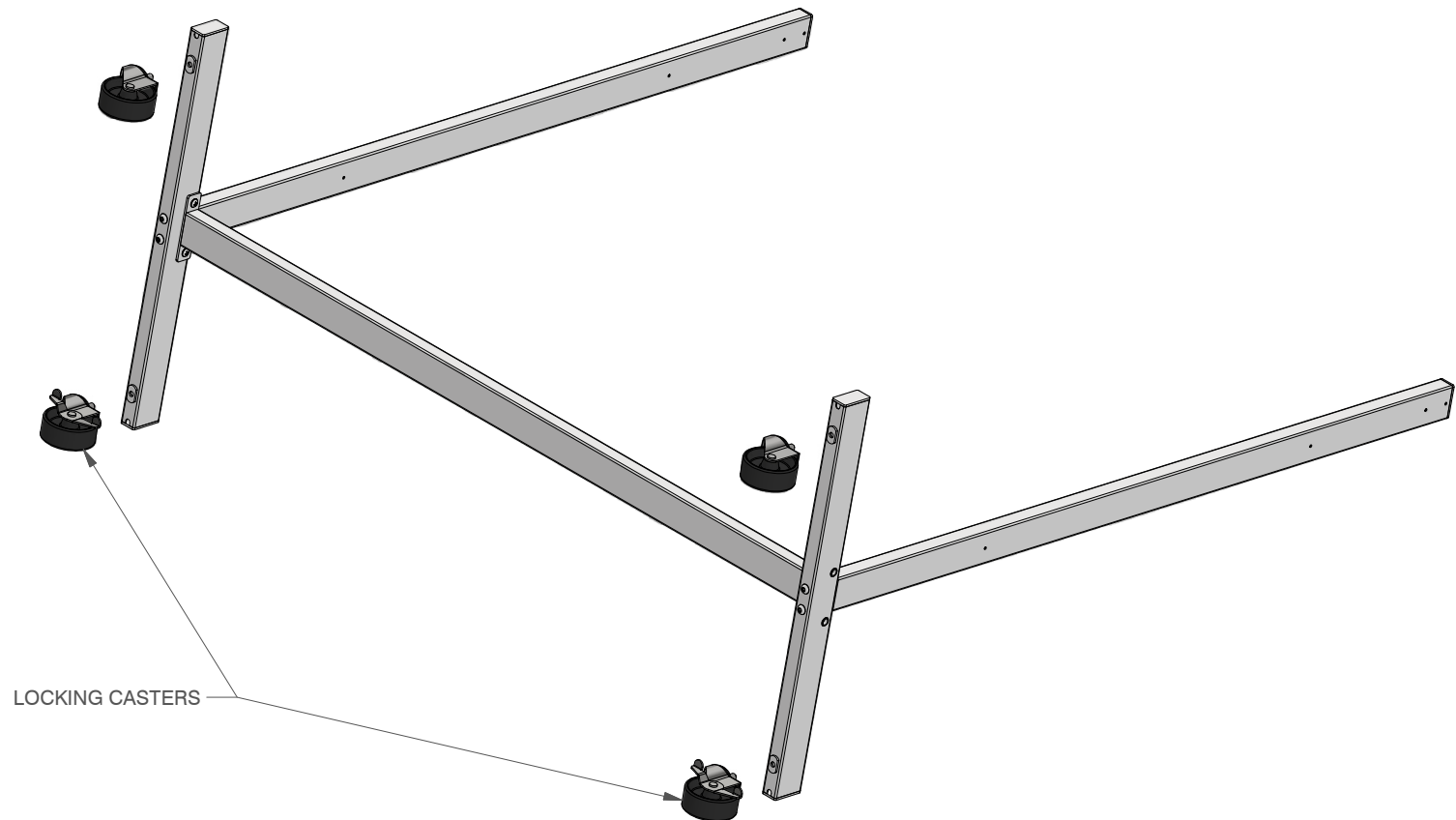
STEP 3:

WITH THE ASSISTANCE OF ANOTHER PERSON OR TWO, TILT THE ASSEMBLY ON IT'S SIDE SO THE BOTTOM OF THE T-LEGS CAN BE ACCESSED

SCREW THE CASTERS INTO THE THREADED HOLES AT THE ENDS OF THE T-LEGS. LOCKING CASTERS SHOULD BE INSTALLED ON THE T-LEGS ON THE FLOOR

WHEN ALL CASTERS ARE TIGHTLY SECURED, ENGAGE THE LOCKS ON ALL THE LOCKING CASTERS

WITH THE ASSISTANCE OF ANOTHER PERSON OR TWO, TILT THE ASSEMBLY BACK TO AN UPRITE POSITION WITH ALL FOUR CASTERS ON THE FLOOR

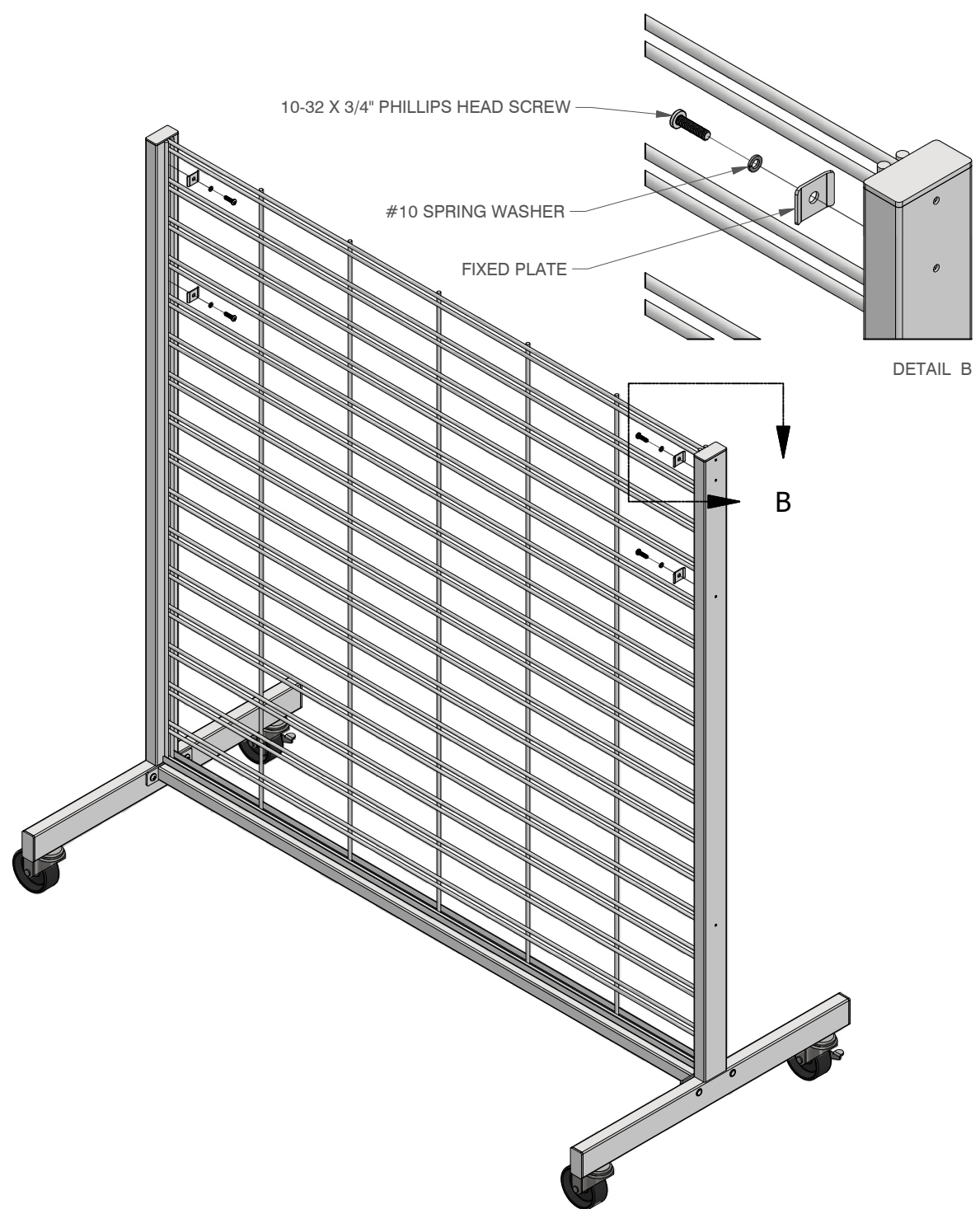
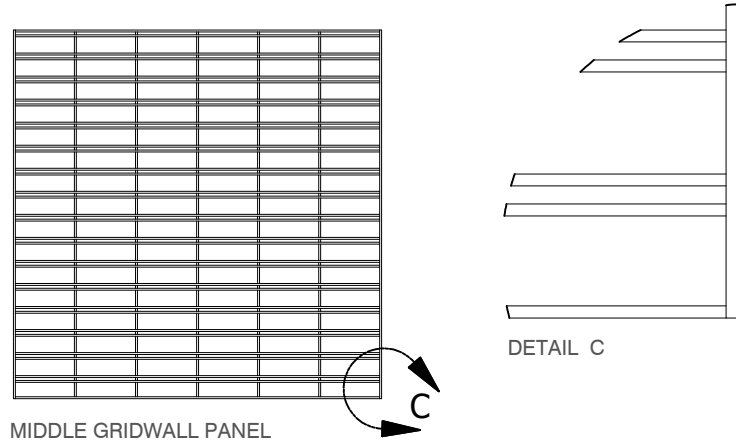


STEP 4:
SLIDE MIDDLE GRIDWALL PANEL BETWEEN T-LEGS AND
INTO THE CHANNEL ON THE BOTTOM CONNECTING BAR.

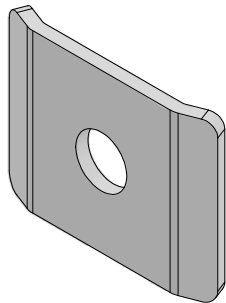
NOTE:
THE BOTTOM OF THE MIDDLE GRIDWALL PANEL WILL ONLY
HAVE ONE HORIZONTAL WIRE AS SHOWN BELOW
(SEE DETAIL C)

PLACE A FIXED PLATE OVER THE END VERTICAL WIRES AND
RUN A 10-32 X 3/4" SCREW AND SPRING WASHER THROUGH
THE PLATE AND INTO THE T-LEG AT 2 POSITIONS PER SIDE
(SEE DETAIL B)

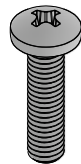
REPEAT THIS PROCESS FOR ANY ADDITIONAL SECTIONS IN
THE RUN



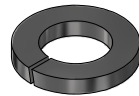
HARDWARE



FIXED PLATE



10-32 X 3/4" PHILLIPS HEAD SCREW



#10 SPRING WASHER

STEP 5:

PLACE TWO BOTTOM SUPPORT PLATES OVER ONE OF THE T-LEG BASE TUBES AT THE END OF THE RUN (LEAVE APPROXIMATELY 1/2" OF TUBE EXPOSED AT THE ENDS)

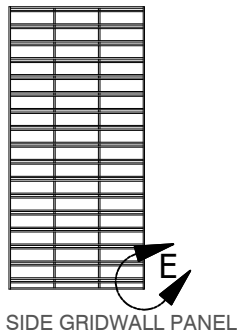
SLIDE SIDE GRIDWALL INTO THE BOTTOM SUPPORT PLATES ENSURING THE HORIZONTAL WIRES ARE FACING OUTWARD (SEE DETAIL D)

NOTE:

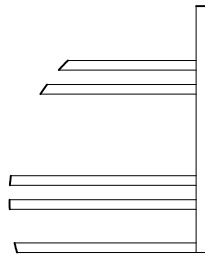
THE BOTTOM OF THE SIDE GRIDWALL PANEL WILL ONLY HAVE ONE HORIZONTAL WIRE AS SHOWN BELOW (SEE DETAIL E)

PLACE A FIXED PLATE OVER THE TOP TWO HORIZONTAL WIRES AND RUN A 10-32 X 3/4" SCREW AND SPRING WASHER THROUGH THE PLATE AND INTO THE T-LEG. REPEAT FOR THE LOWER EXPOSED HOLE (SEE DETAIL D)

REPEAT THIS PROCESS FOR THE OTHER END OF THE RUN

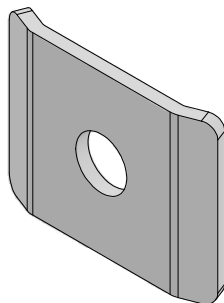


SIDE GRIDWALL PANEL

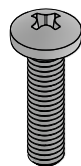


DETAIL E

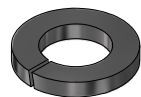
HARDWARE



FIXED PLATE



10-32 X 3/4" PHILLIPS HEAD SCREW



#10 SPRING WASHER

